

# HUMPHEAD CICHLID

*Cyphotilapia frontosa*

FLUVAL 

With its majestic, calm demeanor and bold, contrasting color pattern, it's no surprise the Humphead Cichlid is one of the most popular fish from Lake Tanganyika!



## SKILL LEVEL

**Moderate**

Not the most demanding of species, but not recommended for beginners due to its sheer size, its need for hard, alkaline water, and the care required when selecting tankmates.



## DIET

**Carnivore**

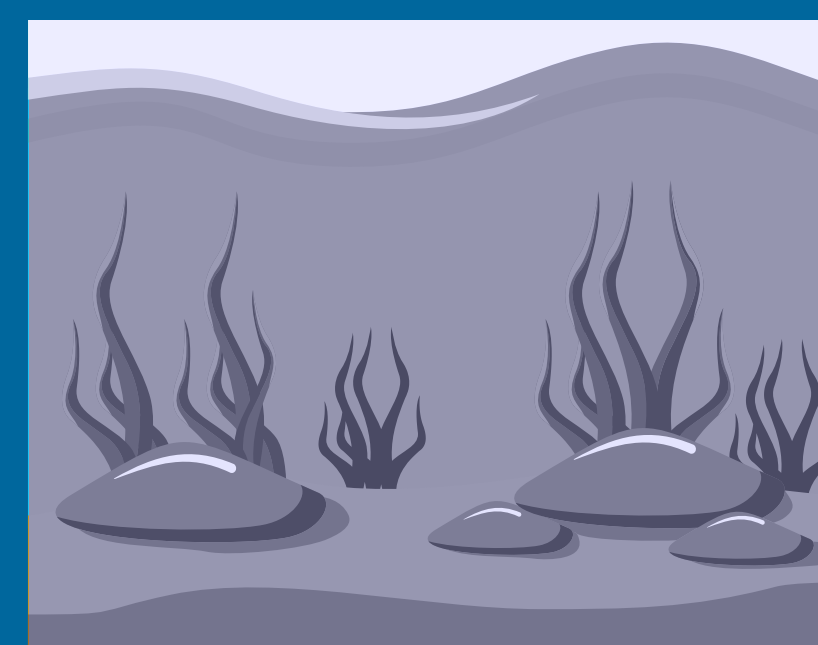
A predator in the wild. In captivity, accepts a variety of foods including sinking pellets and frozen foods like bloodworms, krill and shrimp. Live foods such as earthworms are an excellent supplement.



## DISTRIBUTION

**Eastern Africa**

Endemic to Lake Tanganyika.



## MIN. AQUARIUM SIZE

**125 US Gal / 500 L**

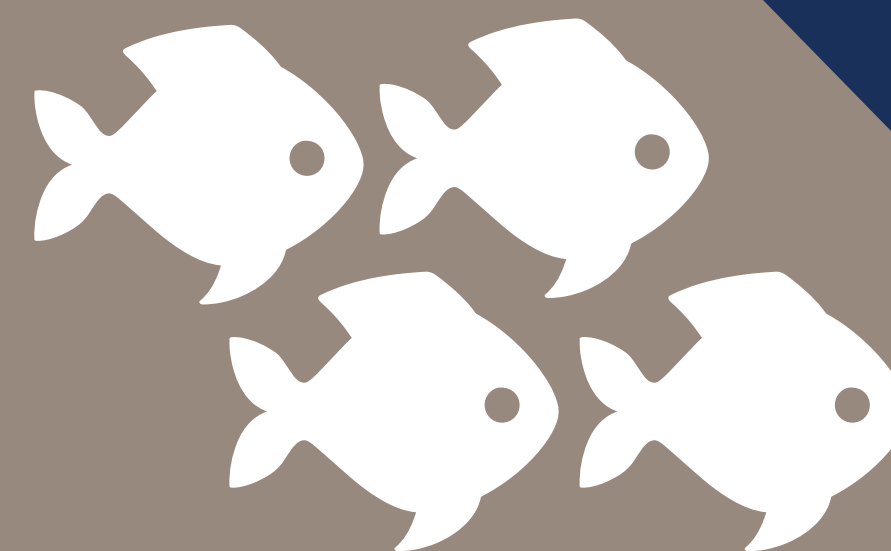
Large aquariums are necessary to accommodate their impressive adult size. Prefers large smooth stones and large rock caves as décor, a sand substrate to allow for digging, and dim lighting.



## BEHAVIOR

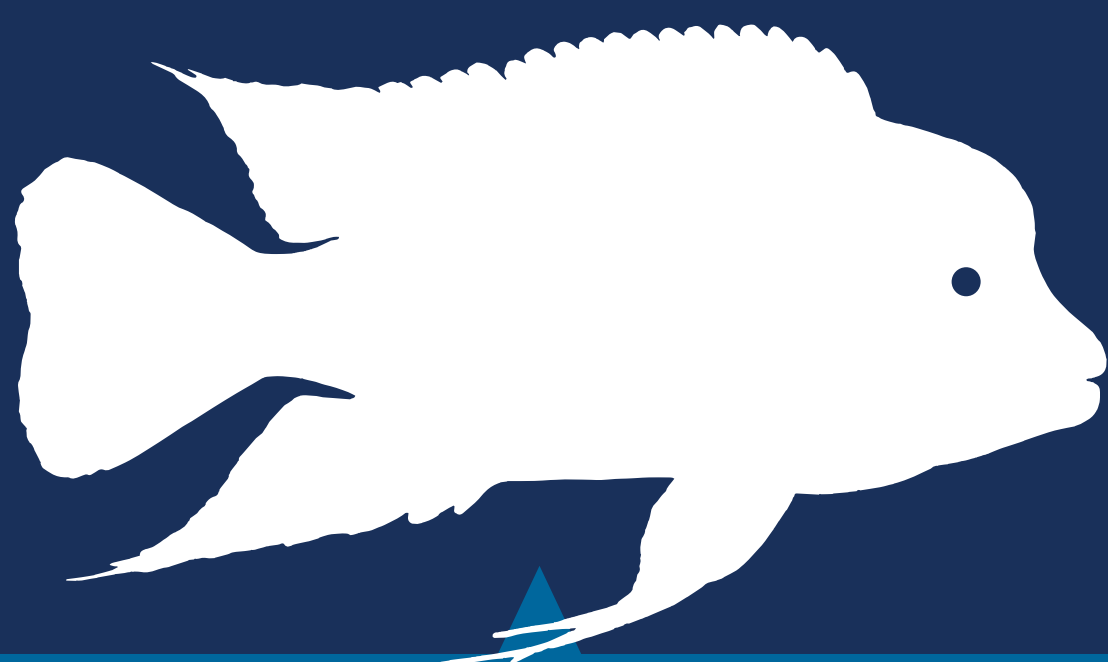
**Semi-aggressive**

A relatively peaceful species, but still a large cichlid capable of territorial / aggressive behaviors. Should be kept in groups of at least 4 or 5 specimens. Not the most active of fish.



## COMPATIBILITY

Compatible with large, peaceful *Aulonocara* and *Haplochromis* species of Lake Malawi, as well as suitably sized, peaceful Lake Tanganyika species. Fish small enough to fit in their mouths will be eaten and should therefore be avoided.



**MAX LENGTH**  
**15" / 38 cm**



## WATER

**Temp:** 76-82°F / 24-28°C  
**pH:** 8.0-8.4  
**Hardness:** 12-20 dH

