

# ROPEFISH

## *Erpetoichthys calabaricus*



Ropefish belong to Polypteriformes, an ancient order of fish thought to be the sister group to all ray-finned fish. Their fossil record dates back approximately 93.9 to 100.5 million years!



### SKILL LEVEL

## Moderate

Not recommended for beginners due to their jumping abilities and slightly more particular care requirements.



### DIET

## Carnivore

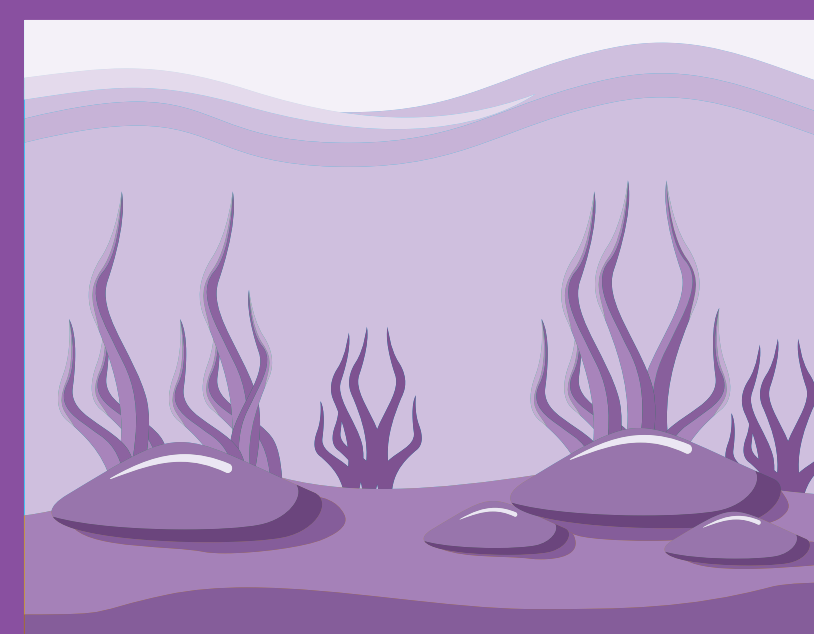
In the wild, consumes crustaceans, insects and small fish. In the aquarium, chopped earthworms, shrimp, mussels and bloodworms are typically accepted. Some specimens will eat sinking pellets.



### DISTRIBUTION

## Western Africa

River estuaries from Ouémé River in Benin to Sanaga River in Cameroon.



### MIN. AQUARIUM SIZE

## 50 US Gal / 200 L

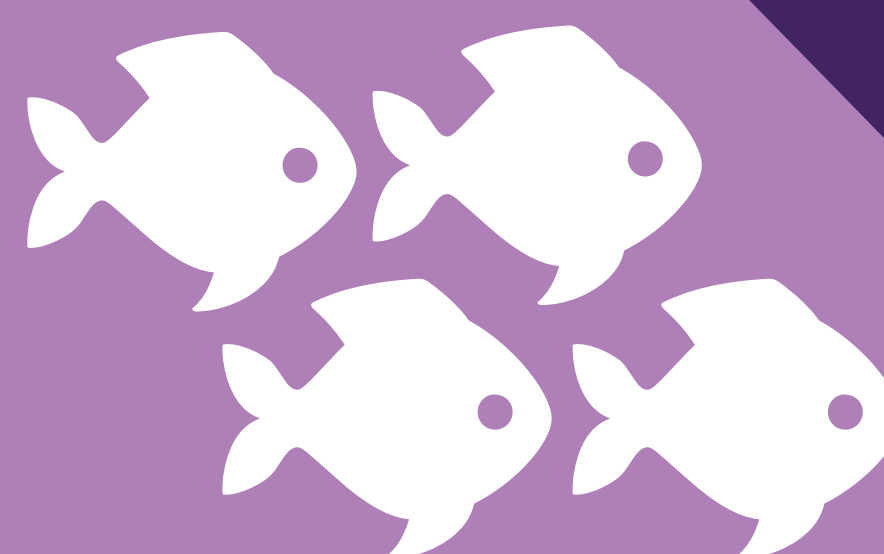
Best kept in long, wide aquariums to accommodate their body length. Sand substrates are required.



### BEHAVIOR

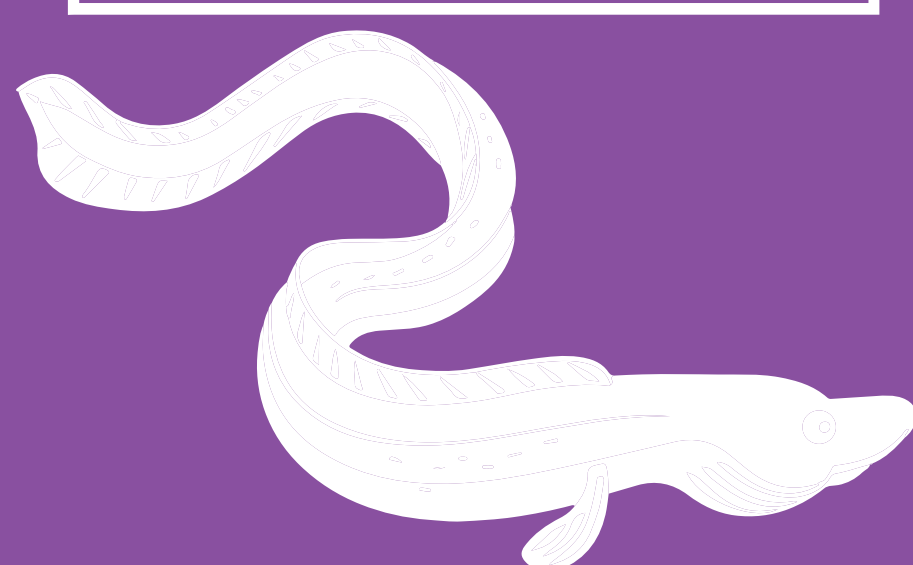
## Semi-aggressive

Peaceful, social, and friendly, but nevertheless predatory. Nocturnal, but readily adapts to a diurnal life cycle if comfortable in its aquarium.

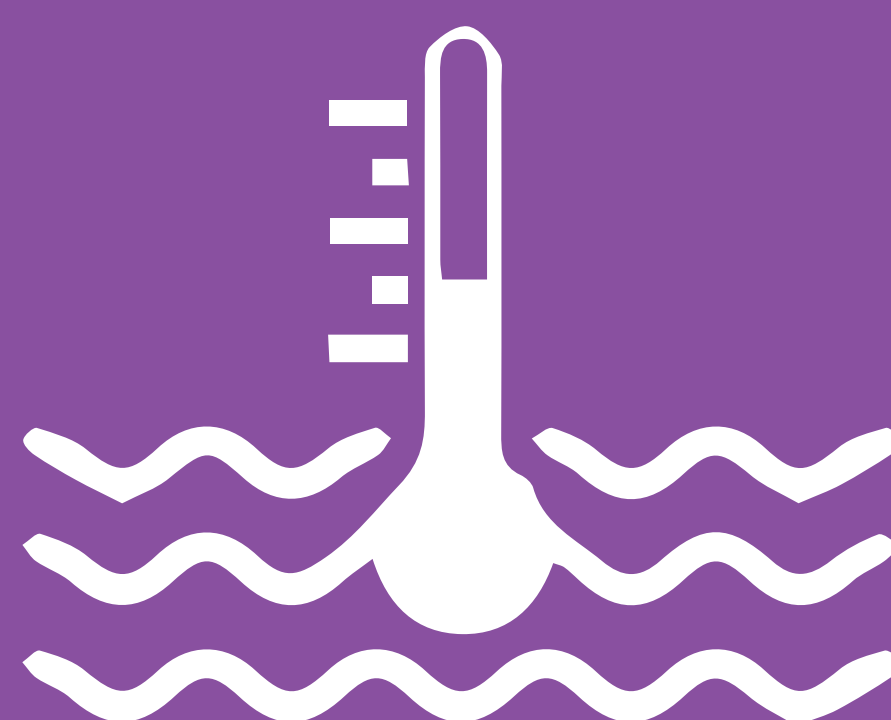


### COMPATIBILITY

Will eat tankmates that fit in its mouth. Do not keep with boisterous species (cichlids, larger tetras, etc.). Best kept in community tanks with other larger African ambush predators.



**MAX LENGTH**  
**36" / 90 cm**



**WATER**  
**Temp:** 74-82°F / 23-28°C  
**pH:** 6.0-7.5  
**Hardness:** 3-25 dH

