



ANGELFISH

Pterophyllum scalare



A classic in the fishkeeping hobby, Angelfish are a beautiful, personable and highly popular species. They're available in a number of color forms, including silver, black, gold, and koi.



SKILL LEVEL

Beginner

Resilient and unfussy: suitable for all levels of fishkeepers.



DIET

Omnivore

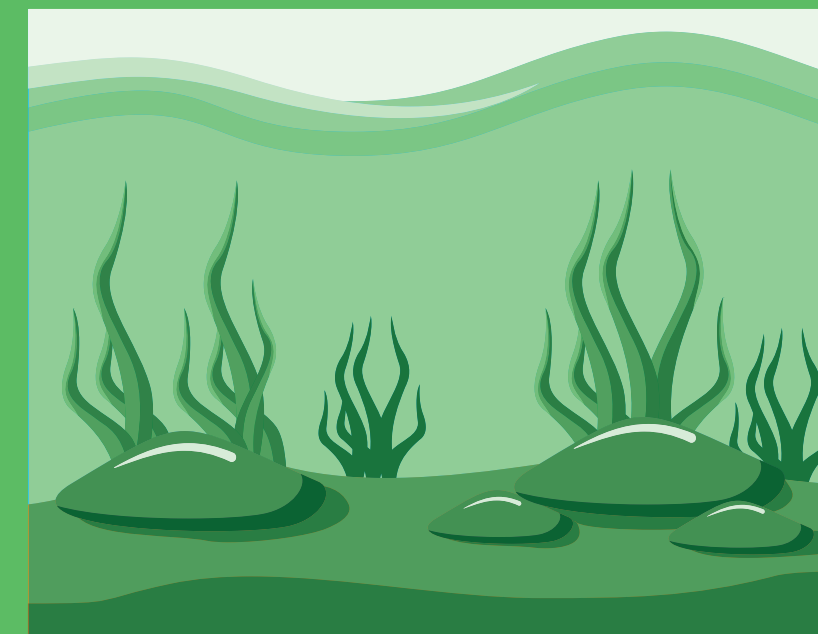
In the wild, Angelfish typically consume small aquatic invertebrates and crustaceans. In the aquarium they will accept a wide variety of pellets, flakes, freeze-dried and frozen foods.



DISTRIBUTION

South America

Amazon River basin in Peru, Colombia, and Brazil, Rio Amapá in Brazil, Rio Oyapockin French Guiana, Essequibo River in Guyana.



MIN. AQUARIUM SIZE

30 US Gal / 120 L

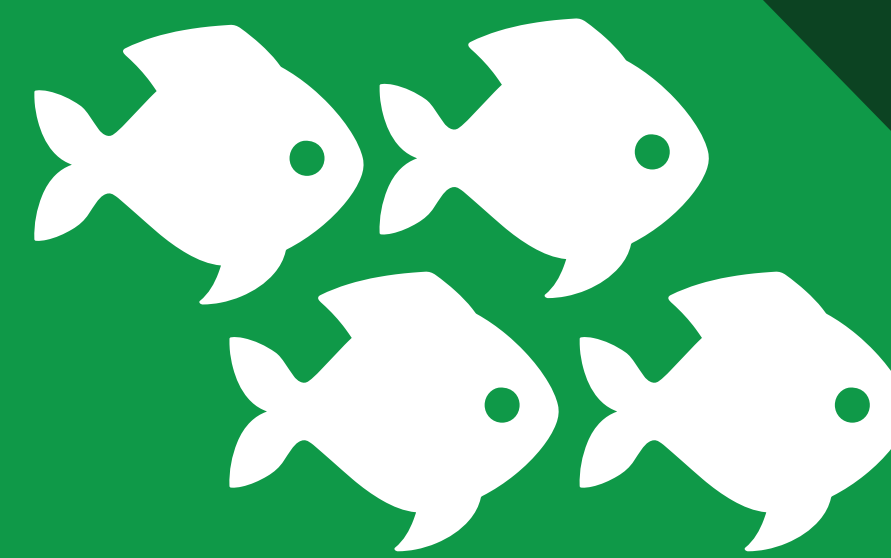
Best kept in taller aquariums to accommodate their large size and tall bodies. Include vertical pieces of branch driftwood and plants with broad leaves in their aquarium.



BEHAVIOR

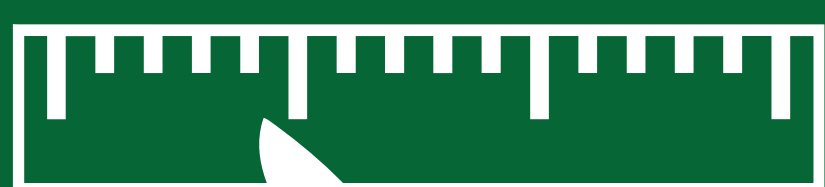
Peaceful

Intraspecific aggression can be expected. Males are more territorial and aggressive, particularly when breeding.

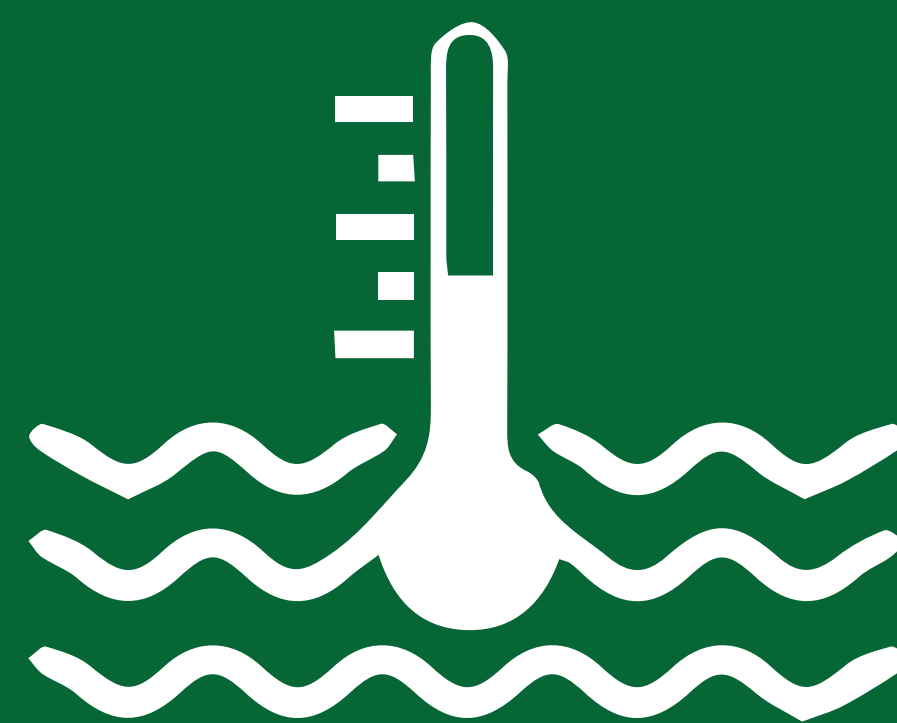


COMPATIBILITY

Keep in pairs for breeding, and otherwise in small groups. Generally suitable for tropical community aquariums but may eat small tankmates.



MAX LENGTH
6" / 15 cm



WATER

Temp: 76-86°F / 24-30°C
pH: 6.0-7.4
Hardness: 1-18 dH

