



# FX UVC

## IN-LINE CLARIFIER FOR AQUARIUMS

- INSTALLATION ON  
FLUVAL FX2/FX4/FX6 FILTER COVER PAGE 2
- INSTALLATION ON CABINET WALL WITH  
FLUVAL FX2/FX4/FX6 FILTER PAGE 3
- INSTALLATION ON CABINET WALL WITH  
CANISTER FILTERS USING 5/8" / 16 mm HOSING PAGE 5



FREE • GRATUIT • GRATIS • GRÁTIS

**3 + 2** YEARS  
ANS  
JAHRE  
AÑOS  
ANOS

EXTENDED WARRANTY WITH ONLINE REGISTRATION  
GARANTIE PROLONGÉE AVEC INSCRIPTION EN LIGNE  
GARANTIEVERLÄNGERUNG MIT ONLINE-REGISTRIERUNG  
GARANTIA EXTENDIDA AL REGISTRARTE ONLINE  
GARANTIA ALARGADA COM REGISTO ONLINE

**WHAT'S INCLUDED**

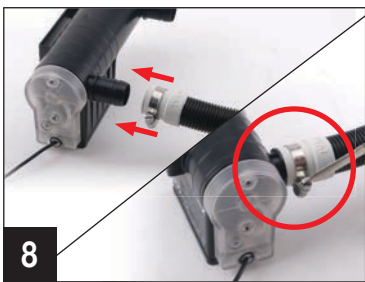


**INSTALLATION ON FLUVAL FX2/FX4/FX6 FILTER COVER**

**PREPARING YOUR FILTER**

1. Turn filter IN and OUT valves to the closed (horizontal) position.
2. Unplug filter from electrical power supply.
3. Prior to UVC installation, output hosing must be emptied of water. To do this, remove OUT AquaStop valve from filter.
4. Remove opposite end of output hosing from aquarium and drain water into sink or basin. Open AquaStop valve to empty water from hose.
5. Disconnect output hosing from AquaStop valve by loosening the metal clamp.
6. Reinstall OUT AquaStop valve while pressing firmly until it clicks into place.
7. Place the other end of the output hosing back into the aquarium.

**ADDING THE UVC UNIT**



- 8**
8. Slide metal clamp over end of filter output hosing (approx. 0.25" / 1 cm from end) and attach to UVC connector nearest to the power cord. Secure clamp by tightening it with screwdriver.



- 9**
9. Attach another metal clamp to UVC rubber elbow adapter (approx. 0.25" / 1 cm from end).



- 10**
10. Connect long end of rubber elbow adapter to UVC unit. Secure clamp by tightening it with screwdriver.



- 11**
11. Attach another metal clamp onto rubber elbow adapter (approx. 0.25" / 1 cm from end).



**12.** Attach rubber elbow adapter to filter output valve and secure clamp by tightening it with screwdriver.



**13.** Double check all metal clamps are positioned approx. 0.25" / 1 cm from ends and are tightly secured with a screwdriver to ensure watertight seal.



**14.** Open filter IN and OUT valves and wait 15 minutes to ensure connections are watertight.

**15.** Plug in FX filter to electrical outlet. The electronic automatic priming sequence will begin.



**16.** Ensure water is flowing out from filter. Once completed, connect power supply to UVC unit and plug into electrical outlet. A light indicator (visible through the semi-transparent lamp cover) will show that the UVC unit is operating.

## INSTALLATION ON CABINET WALL WITH FLUVAL FX2/FX4/FX6 FILTER

### IMPORTANT:

- This installation option requires one 1" / 25 mm FX hose for cabinet mount (sold separately – # A20233) or equivalent 1" / 25 mm inner diameter vinyl hose (sold separately).
- Self-tapping screws supplied with UVC unit are suitable for wooden cabinet walls with a minimum thickness of 0.6" / 15 mm. Installation is not recommended on moving elements (i.e. cabinet doors).
- UVC must be connected to filter output hosing only. Never install UVC to filter intake hosing.
- Ensure UVC and hosing are always positioned above FX filter cover.

1. To prepare FX filter for UVC installation, refer to the Preparing Your Filter section (steps 1-7).
2. Select desired UVC location on cabinet wall.
3. Using a screwdriver, affix mounting bracket to cabinet wall using screw holes (A) for horizontal positioning, or holes (B) for vertical positioning.



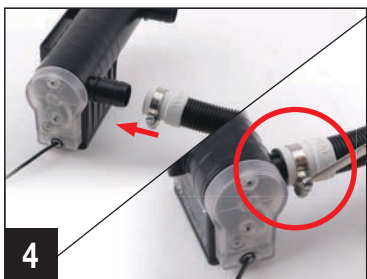
**IMPORTANT:** If installing horizontally, ensure mounting bracket is placed so that the screw holes appear below the Fluval logo.



**3 HORIZONTAL**



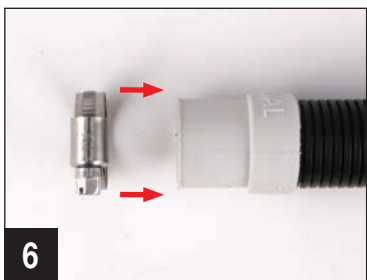
**3 VERTICAL**



4. Slide metal clamp over end of filter output hosing (approx. 0.25" / 1 cm from end) and attach to UVC connector (either side as the UVC works in both directions).



5. Slide UVC unit into mounting bracket until it clicks into place.



6. Slide metal clamp over one end of 1" / 25 mm FX hose for cabinet mount (sold separately – # A20233) or equivalent 1" / 25 mm inner diameter vinyl hose (sold separately). Ensure clamp is positioned approx. 0.25" / 1 cm from end.



7. Slide metal clamp over other end of 1" / 25 mm connection hose (approx. 0.25" / 1 cm from end) and attach to filter OUT valve. **IMPORTANT:** For optimal performance, ensure all hosing follows a straight path with no loops and very little slack.



8. Double check all metal clamps are positioned approx. 0.25" / 1 cm from ends and are tightly secured with a screwdriver to ensure watertight seal.



9. Open filter IN and OUT valves and wait 15 minutes to ensure connections are watertight.

10. Plug in FX filter into electrical outlet. The electronic automatic priming sequence will begin.

11. Ensure water is flowing out from filter. Once completed, connect power supply to UVC unit and plug into electrical outlet. A light indicator (visible through the semi-transparent lamp cover) will show that the UVC unit is operating.



# INSTALLATION ON CABINET WALL WITH CANISTER FILTERS USING 5/8" / 16 mm HOISING

## IMPORTANT:

- This installation option requires one 5/8" / 16 mm inner diameter vinyl hose (sold separately).
- Self-tapping screws supplied with UVC unit are suitable for wooden cabinet walls with a minimum thickness of 0.6" / 15 mm. Installation is not recommended on moving elements (i.e. cabinet doors).
- UVC must be connected to filter output hosing only. Never install UVC to filter intake hosing.
- Ensure UVC and hosing are always positioned above filter cover.

## PREPARING YOUR FILTER

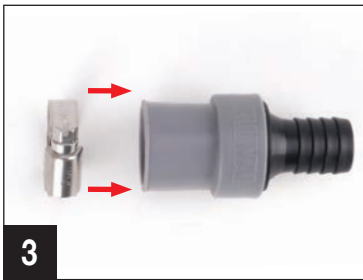
1. If filter is equipped with valves, ensure they are set to the closed position.
2. Unplug filter from electrical power supply.
3. Prior to UVC installation, refer to your filter manual for hose disassembly procedure. Output hose must be emptied of any water before starting the UVC connection process.
4. Disconnect output hose from filter, ensuring other end of hose remains in aquarium.

## ADDING THE UVC UNIT

1. Select desired UVC location on cabinet wall.
2. Using a screwdriver, affix mounting bracket to cabinet wall using screw holes (A) for horizontal positioning, or holes (B) for vertical positioning.



**IMPORTANT:** If installing horizontally, ensure mounting bracket is placed so that the screw holes appear below the Fluval logo.



3. Slide metal clamps over each of the two 1" / 25 mm to 5/8" / 16 mm hosing adapters (approx. 0.25" / 1 cm from end).



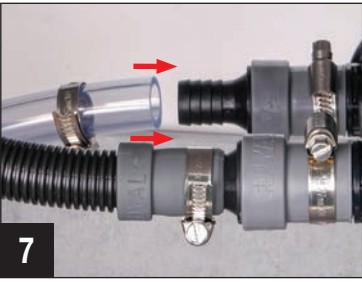
4. Install hosing adapters on each UVC connector.



5. Slide metal clamp over end of filter output hosing (approx. 0.25" / 1 cm from end) and insert into hose adapter (either side as the UVC works in both directions).



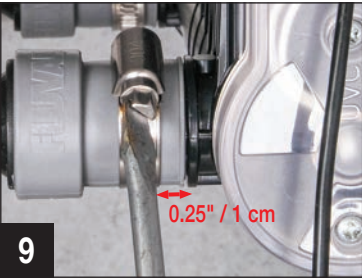
6. Slide UVC unit into mounting bracket until it clicks into place.



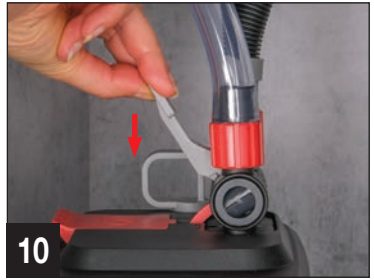
7. Slide metal clamp over one end of 5/8" / 16 mm vinyl hosing (sold separately). Ensure clamp is positioned approx. 0.25" / 1 cm from end and attach to UVC connector.



8. Attach other end of connection hose to filter output valve. **IMPORTANT:** For optimal performance, ensure all hosing follows a straight path with no loops and very little slack.



9. Double check all metal clamps are positioned approx. 0.25" / 1 cm from ends and are tightly secured with a screwdriver to ensure watertight seal.



10. Open filter input and output valves (if equipped) and wait 15 minutes to ensure connections are watertight.

11. Plug in filter to electrical outlet.

12. Ensure water is flowing out from filter. Once completed, connect power supply to UVC unit and plug into electrical outlet. A light indicator (visible through the semi-transparent lamp cover) will show that the UVC unit is operating.

