



# FluvalSmart App User Manual

Version: 1.0



## JUMP TO A SECTION

- 1 APP OVERVIEW**
  - 1.1 Overview
  - 1.2 Applicable Models
- 2 BEFORE YOU BEGIN**
  - 2.1 Mobile Device System Requirements
  - 2.2 Connecting Your Light
- 3 OPERATION INSTRUCTIONS**
  - 3.1 App Installation
  - 3.2 App Operation and Settings
  - 3.3 App and Lamp Connection
  - 3.4 Description of the Function Keys
    - 3.4.1 "Man" Mode
    - 3.4.2 "Auto" Mode
    - 3.4.3 "Pro" Mode
    - 3.4.4 Editing Within "Pro" Mode
  - 3.5 Additional Functions
    - 3.5.1 Lamp Scanning Function
    - 3.5.2 Rename the Lamp
    - 3.5.3 Password Management Function
    - 3.5.4 Firmware Update
    - 3.5.5 Remove the Lamp
- 4 OTHER INFORMATION**
  - 4.1 Support
  - 4.2 Set-up Interface

## 1. APP OVERVIEW

### 1.1 Overview

The FluvalSmart app is designed to operate your Fluval aquarium lamp via Bluetooth wireless technology, granting total control of the LED unit and its various light effects (Note: this manual corresponds to lamp firmware version 1.03).

### 1.2 Applicable Models

#### Aquasky 2.0

14550	12 watts	14556	33 watts
14551	16 watts	14549	21 watts
14552	21 watts	14531	12 watts
14553	25 watts	14532	18 watts
14554	27 watts	14533	27 watts
14555	30 watts	14534	35 watts

#### Marine 3.0

14514	22 watts
14515	32 watts
14516	46 watts
14517	59 watts

#### Plant 3.0

14520	22 watts
14521	32 watts
14522	46 watts
14523	59 watts

#### Marine Nano 3.0

14541	20 watts
-------	----------

#### Plant Nano 3.0

14539	15 watts
-------	----------

## 2. BEFORE YOU BEGIN

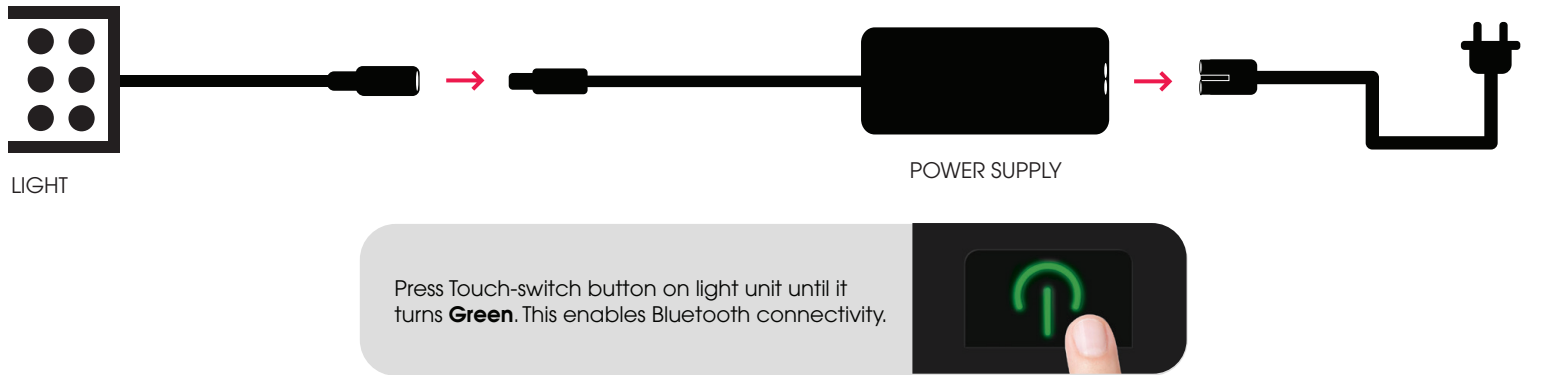
### 2.1 Mobile System Requirements

Bluetooth version BLE 4.0 and above  
Android 4.3 and above / iOS 9.0 and above

### 2.2 Connecting Your Light

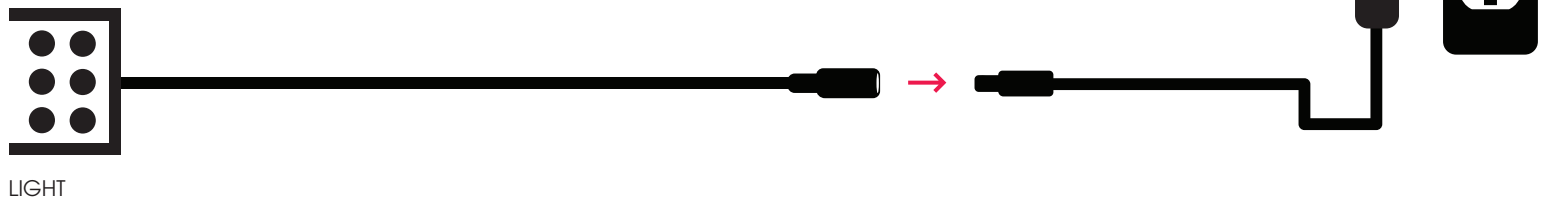
#### Plant 3.0 & Marine 3.0

Connect LED light into transformer, then plug transformer into power outlet.



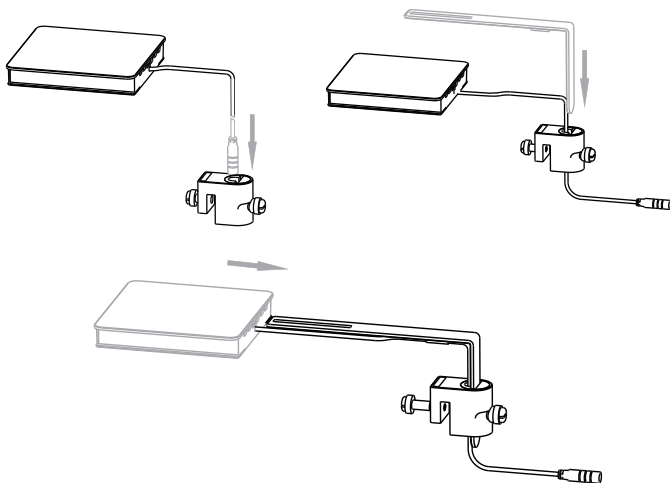
#### Aquasky 2.0

Connect LED light into transformer, then plug transformer into power outlet.

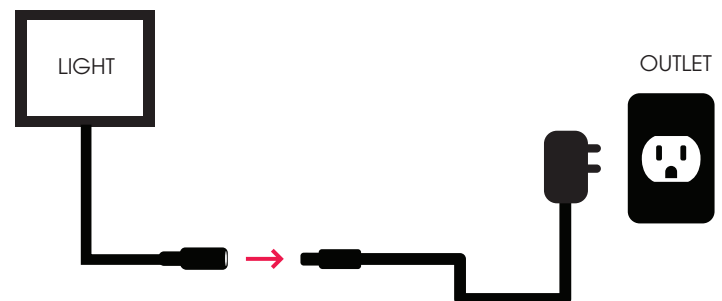


#### Plant Nano 3.0 & Marine Nano 3.0

1 Affix LED to over-the-glass mounting bracket.



2 Connect LED light into transformer, then plug transformer into power outlet.



## 3. OPERATION INSTRUCTIONS

### 3.1 App Installation

#### Download the FluvalSmart App

Within the **Google Play Store** (Android users) or **App Store** (iOS users), search for **"FluvalSmart"** and install the free app.



For Android users



For iOS users

---

### 3.2 App Operation and Settings

- ① After installation, select the **"FluvalSmart"** icon to open the App:



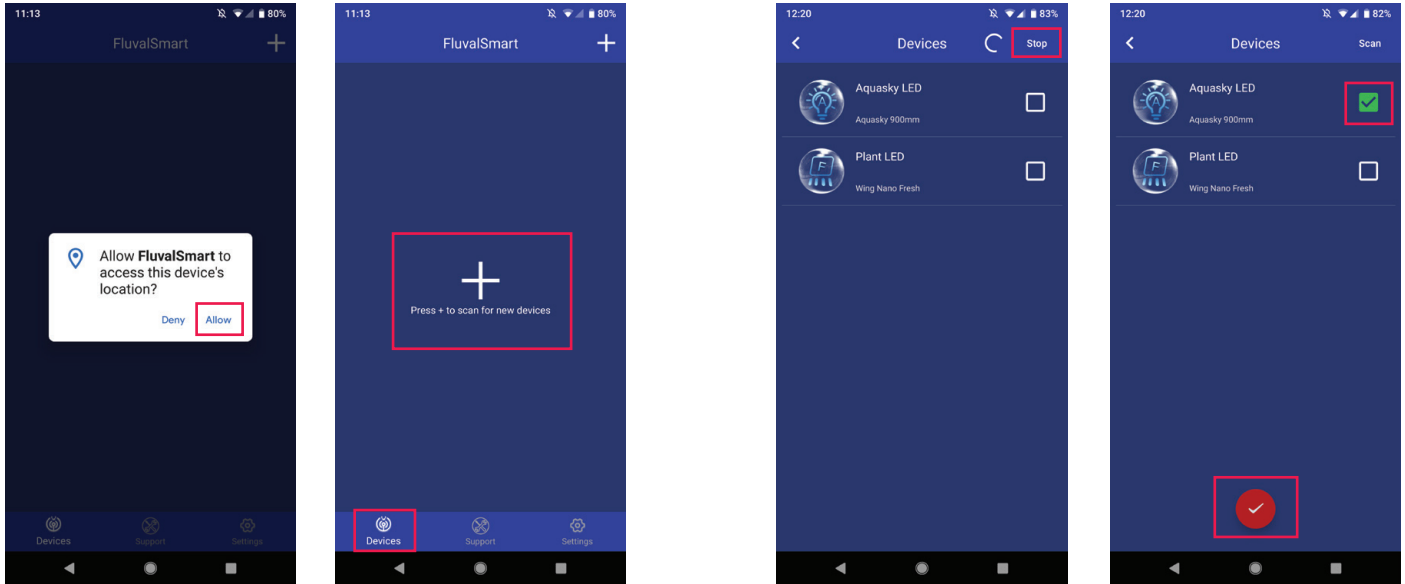
FluvalSmart

- ② When opening the App for the first time, enter your language and country, then select **"Enter"** to access the main screen interface.

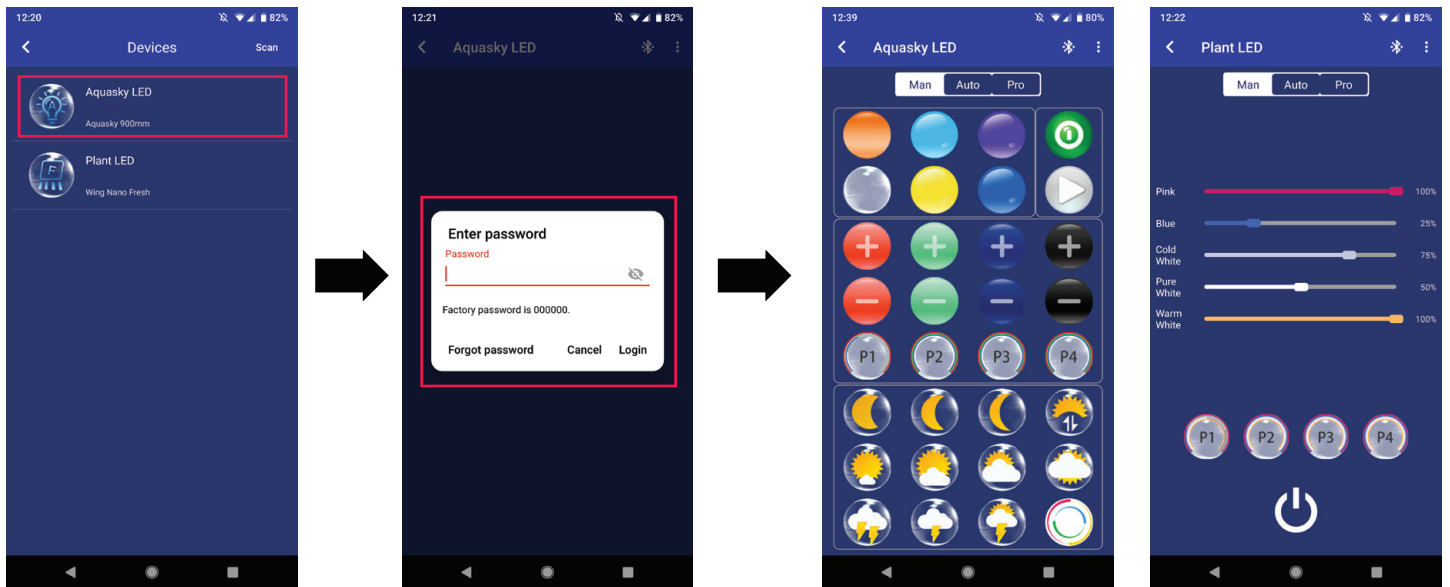


### 3.3 App and Lamp Connection

- 1 Ensure lamp is powered on and Bluetooth connectivity on your mobile device is also on.
- 2 Select the "+" in the middle or upper right corner of the interface to scan your immediate surroundings for compatible Fluval lamps:
  - 3 After your desired lamp appears on screen, select "Stop" in the upper right corner to end scanning, then select the "☐" icon next to your lamp and finally the red "✓" icon at the bottom of the page to save the lamp to the device list:



- 4 Select the desired row from the device list to connect lamp and enter the initial password "000000". You should then see the manual control default screen:



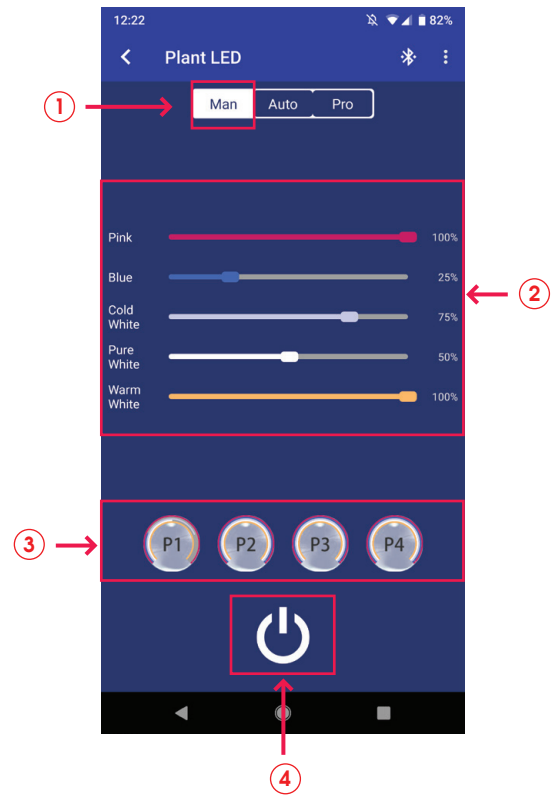
- 5 It is only necessary to enter the "000000" password the first time connecting to the LED lamp. Proceeding connections do not require entering the password as it is stored within the App. Changing the password at a later time is possible.

### 3.4 Description of the Function Keys

#### 3.4.1 "Man" - Manual Mode

##### 3.4.1.1 Plant & Marine 3.0 / Plant & Marine Nano 3.0

- ① Manual mode button.
- ② Brightness adjustment - slide LEFT or RIGHT to control individual color channel intensity.
- ③ P1, P2, P3, and P4 - Save up to 4 manually-entered light spectrums (after manually entering desired color intensity levels, press and hold these buttons to save settings).
- ④ Power button: Turns the lamp on and off.



##### 3.4.1.2 Aquasky 2.0

- ① Manual mode button.
- ② Power button: Turns the lamp on and off.
- ③ Pre-set color buttons.
- ④ RGB+W (Red, Green, Blue and White) brightness adjustment. The black buttons represent white light.
- ⑤ P1, P2, P3, and P4 - Save up to 4 manually-entered light spectrums (after manually entering desired color intensity levels, press and hold these buttons to save settings).
- ⑥ Dynamic effect buttons.
- ⑦ Dynamic effects play / pause button.

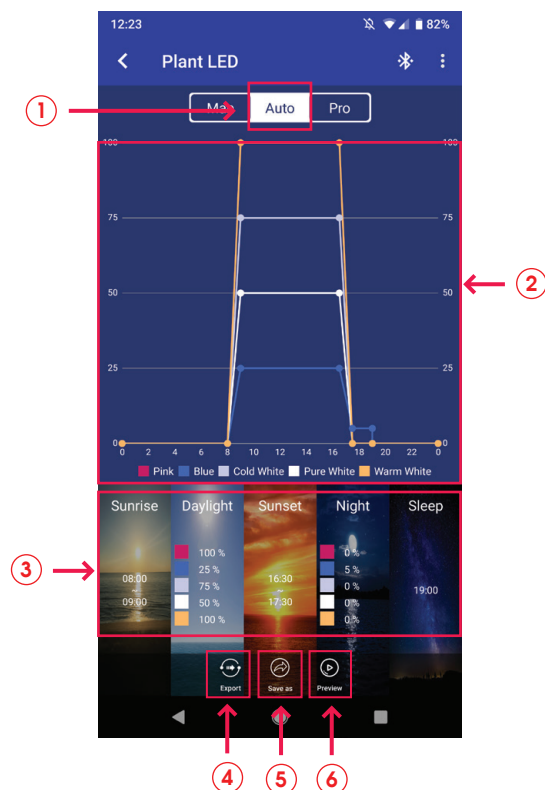


### 3.4 Description of the Function Keys (cont.)

#### 3.4.2 "Auto" - Automatic mode

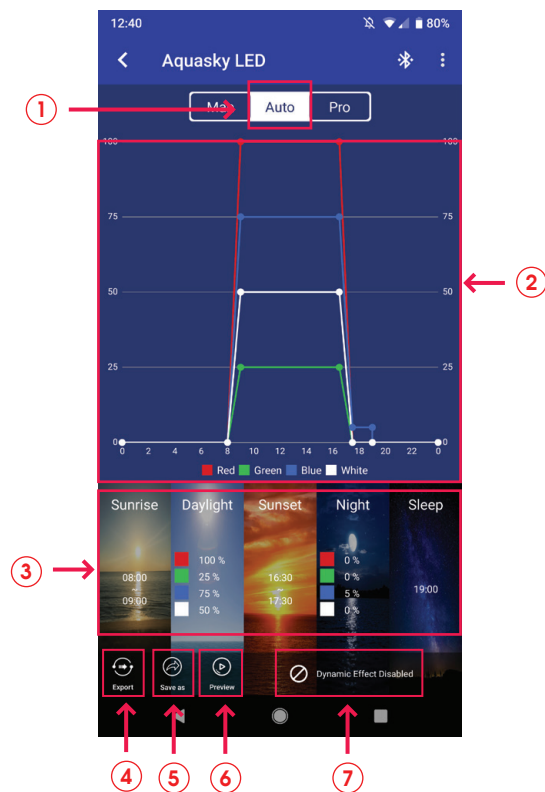
##### 3.4.2.1 Plant & Marine 3.0 / Plant & Marine Nano 3.0

- ① Auto mode button.
- ② The 24-hour running time graph – visually represents current settings.
- ③ Customize lighting schedule and color channel intensities.
- ④ Export – allows user to export (engage) preset or customized files saved within the App.
- ⑤ Save as – allows user to save desired settings.
- ⑥ Preview – Runs through current 24-hour light cycle in under a minute.



##### 3.4.2.2 Aquasky 2.0

- ① Auto mode button.
- ② The 24-hour running time graph – visually represents current settings.
- ③ Customize lighting schedule and color channel intensities.
- ④ Export – allows user to export (engage) preset or customized files saved within the App.
- ⑤ Save as – allows user to save desired settings.
- ⑥ Preview – Runs through current 24-hour light cycle in under a minute.
- ⑦ Dynamic Effects – Select and schedule dynamic effects within a specific time period and day(s) of the week. After running a dynamic effect, it will return to automatic mode by default.

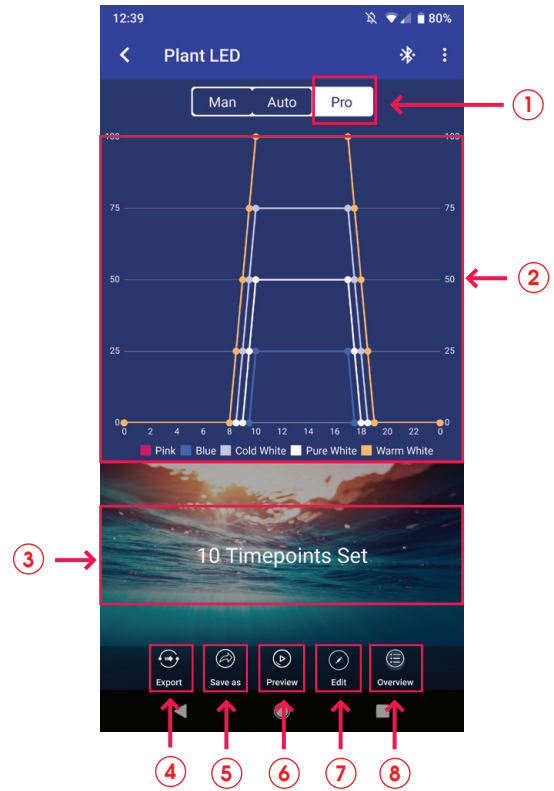


## 3.4 Description of the Function Keys (cont.)

### 3.4.3 "Pro" - Professional mode

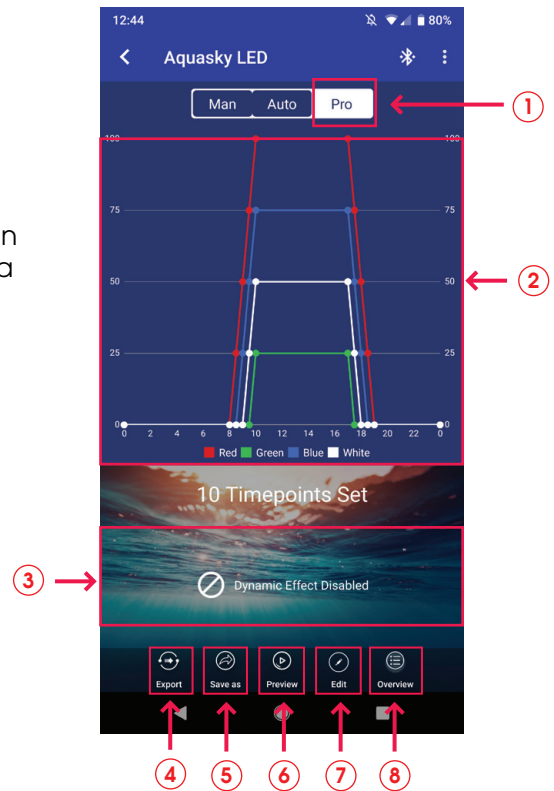
#### 3.4.3.1 Plant & Marine 3.0 / Plant & Marine Nano 3.0

- ① Pro mode button.
- ② The 24-hour running time graph – visually represents current settings.
- ③ Timepoints – confirms the number of various timepoints set throughout the 24-hour light cycle.
- ④ Export – allows user to export (engage) preset or customized files saved within the App.
- ⑤ Save as – allows user to save desired settings.
- ⑥ Preview – Runs through current 24-hour light cycle in under a minute.
- ⑦ Edit – adjust the 24-hour light cycle settings.
- ⑧ Overview – View all timepoints and light intensities set within the 24-hour light cycle.



#### 3.4.3.2 Aquasky 2.0

- ① Pro mode button.
- ② The 24-hour running time graph – visually represents current settings.
- ③ Dynamic Effects – Select and schedule dynamic effects within a specific time period and day(s) of the week. After running a dynamic effect, it will return to pro mode by default.
- ④ Export – allows user to export (engage) preset or customized files saved within the App.
- ⑤ Save as – allows user to save desired settings.
- ⑥ Preview – Runs through current 24-hour light cycle in under a minute.
- ⑦ Edit – adjust the 24-hour light cycle settings.
- ⑧ Overview – View all timepoints and light intensities set within the 24-hour light cycle.

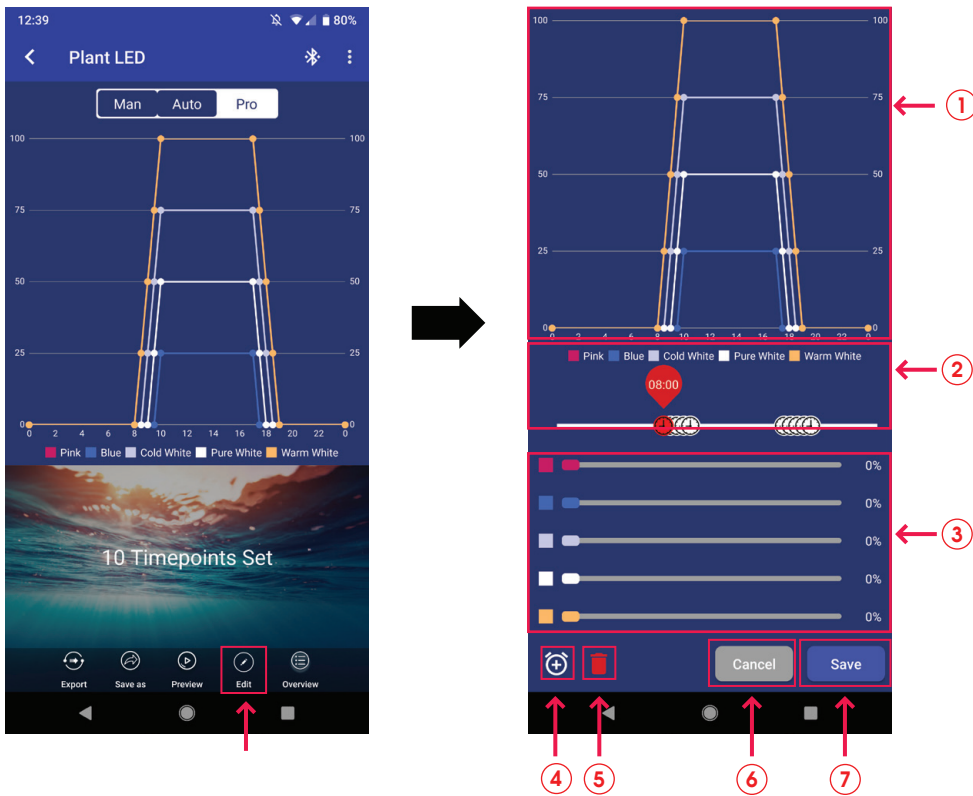


### 3.4 Description of the Function Keys (cont.)

#### 3.4.4 Editing Within "Pro" Mode (FIRMWARE UPDATE REQUIRED - See section 3.5.4)

Select "Pro" on the lamp control interface to enter "Pro" mode.

Select "Edit" at the bottom of the following screen (or you may also select "X Timepoints Set") to access editing features.



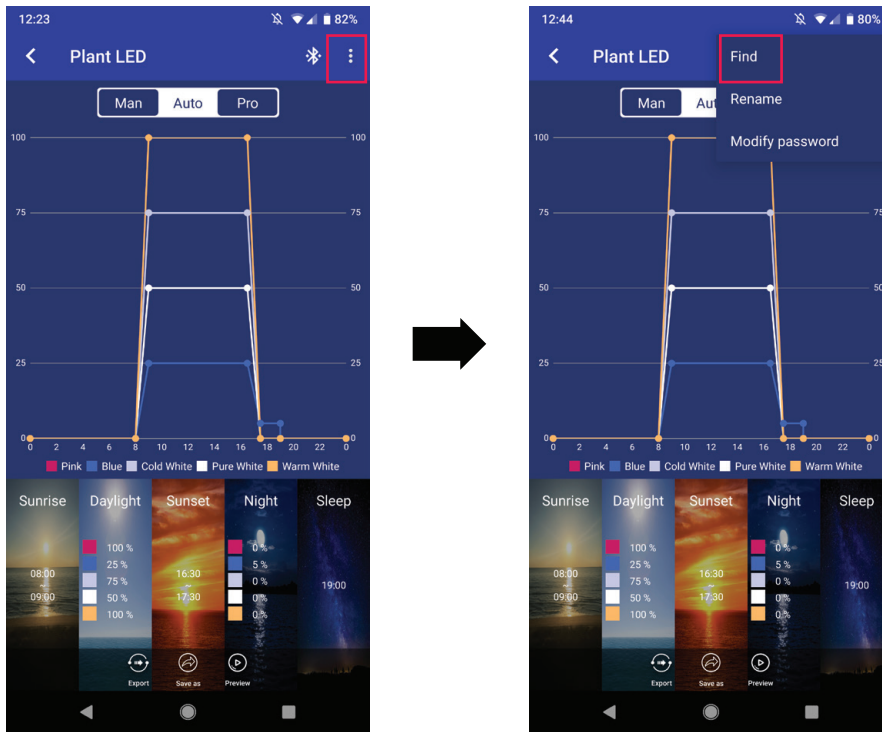
- ① The 24-hour running time graph – visually represents current settings.
- ② Timepoints settings line.
- ③ Brightness adjustment - slide LEFT or RIGHT to control individual color channel intensity.
- ④ Add timepoint (the App allows for up to 10 individual timepoints).
- ⑤ Delete timepoint (a minimum of 4 timepoints must be set in Pro mode).
- ⑥ Cancel - cancels the current screen command and returns to the previously saved parameters.
- ⑦ Save - retains the current screen command.



## 3.5 Additional Functions

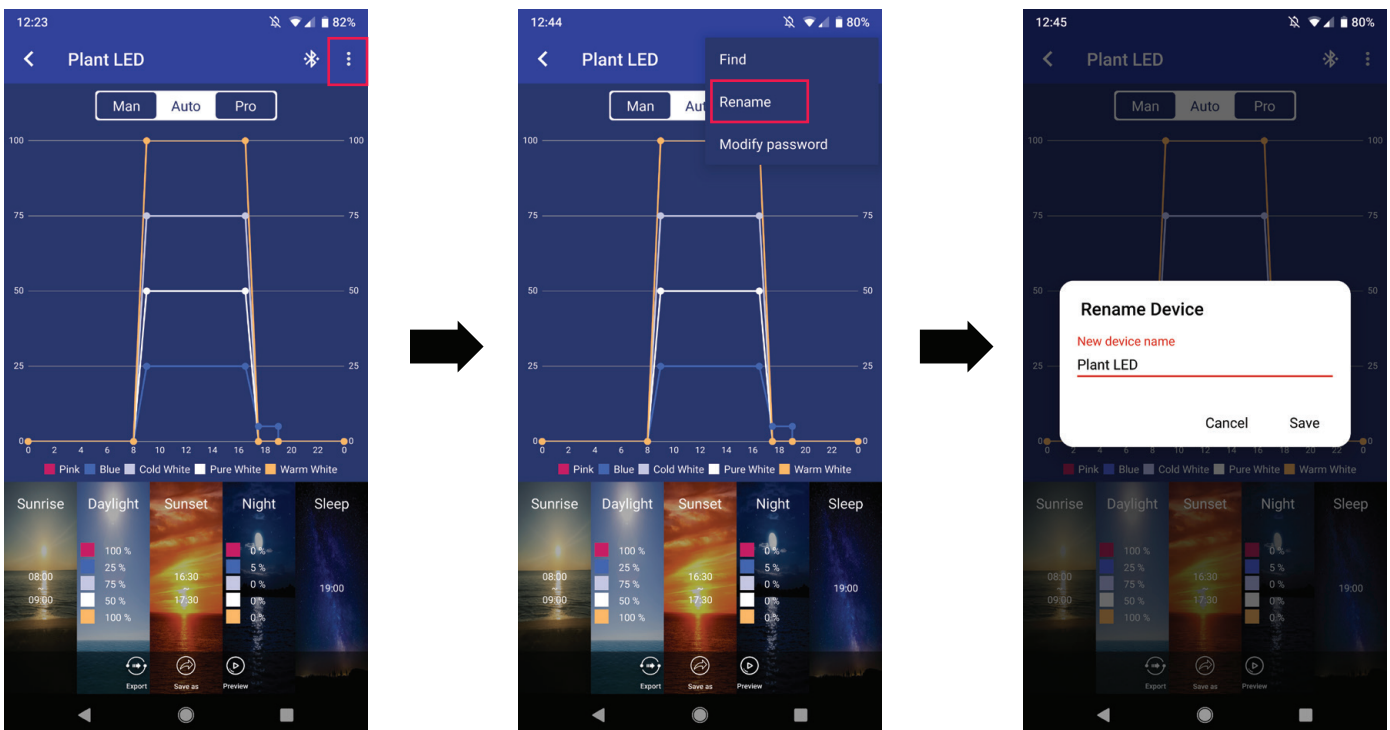
### 3.5.1 Lamp Scanning Function

Select **"Find"** on the main lamp control interface screen to confirm the light unit under current command (this is particularly useful when running several LEDs). The connected lamp will then blink on and off several times.



### 3.5.2 Rename the Lamp

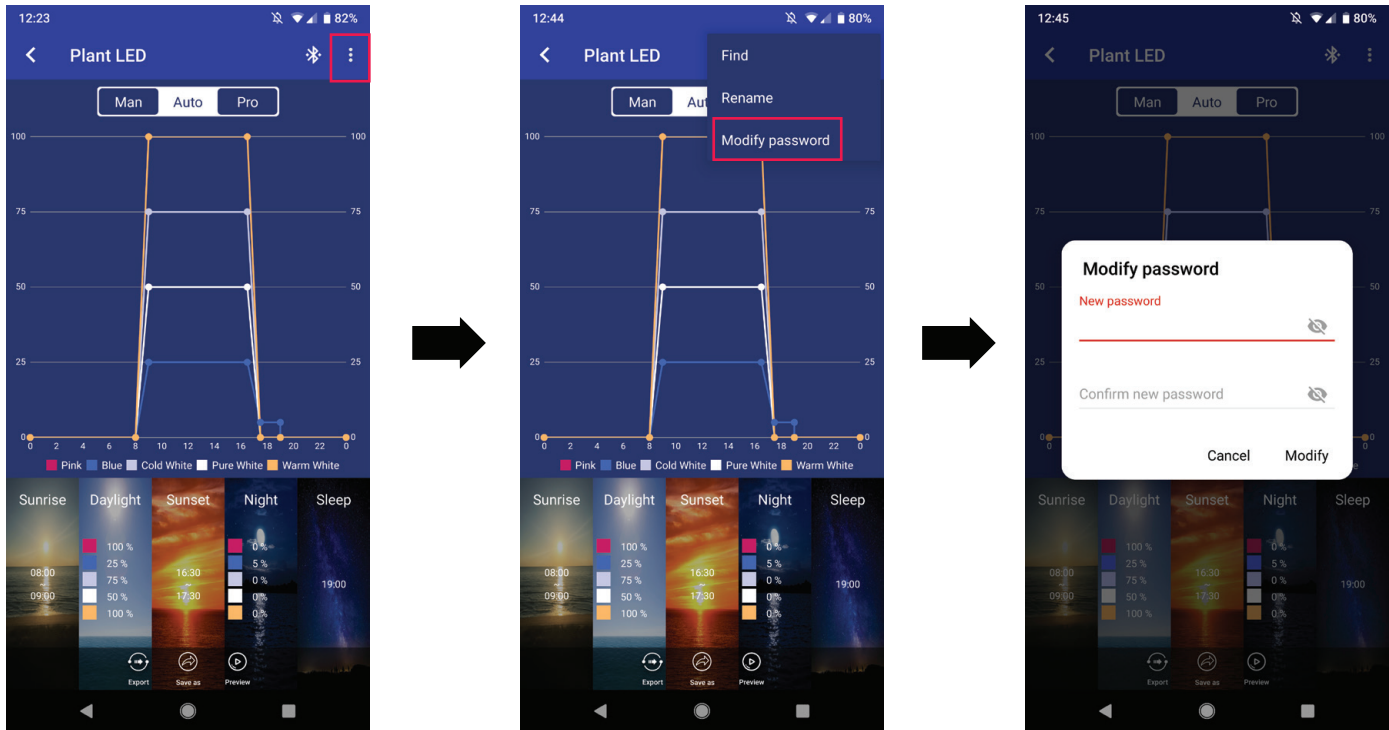
In the main device control interface, you can change the name of the lamp by selecting the **"Rename"** function in the upper right corner:



## 3.5 Additional Functions (cont.)

### 3.5.3 Password Management Function

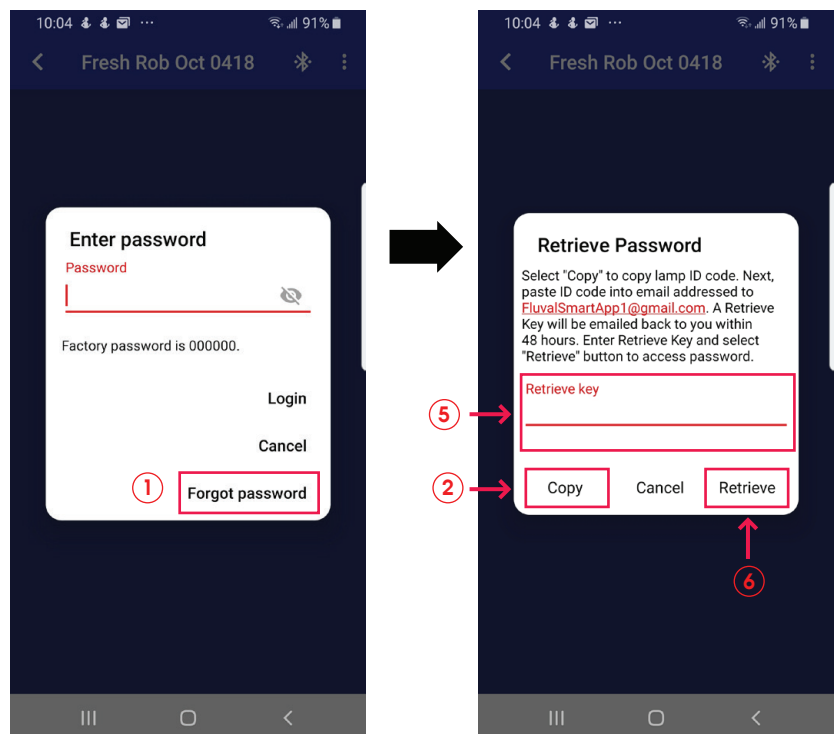
When you connect the lamp for the first time, the system prompts you to enter the initial password "000000". After entering the device control interface, you can modify the initial password by using the "Modify password" function in the upper right corner of the screen (Note: Password requires 6 digits).



#### 3.5.3.1 Retrieve Password

If you forget your password, please follow these steps:

- 1 On the password login screen, select "Forgot Password". A pop-up window will then appear.
- 2 Select "Copy" - this will copy the device information.
- 3 Send an email to [fluvalsmartapp1@gmail.com](mailto:fluvalsmartapp1@gmail.com) requesting a "Retrieve Key" and pasting in the device information you copied from the previous step.
- 4 Flual's technical support team will then send you a retrieve key by email, which you will need to paste into the retrieve key line as shown in 5. With your retrieve key entered, select "Retrieve" as shown in 6 - you will then see your original password appear.




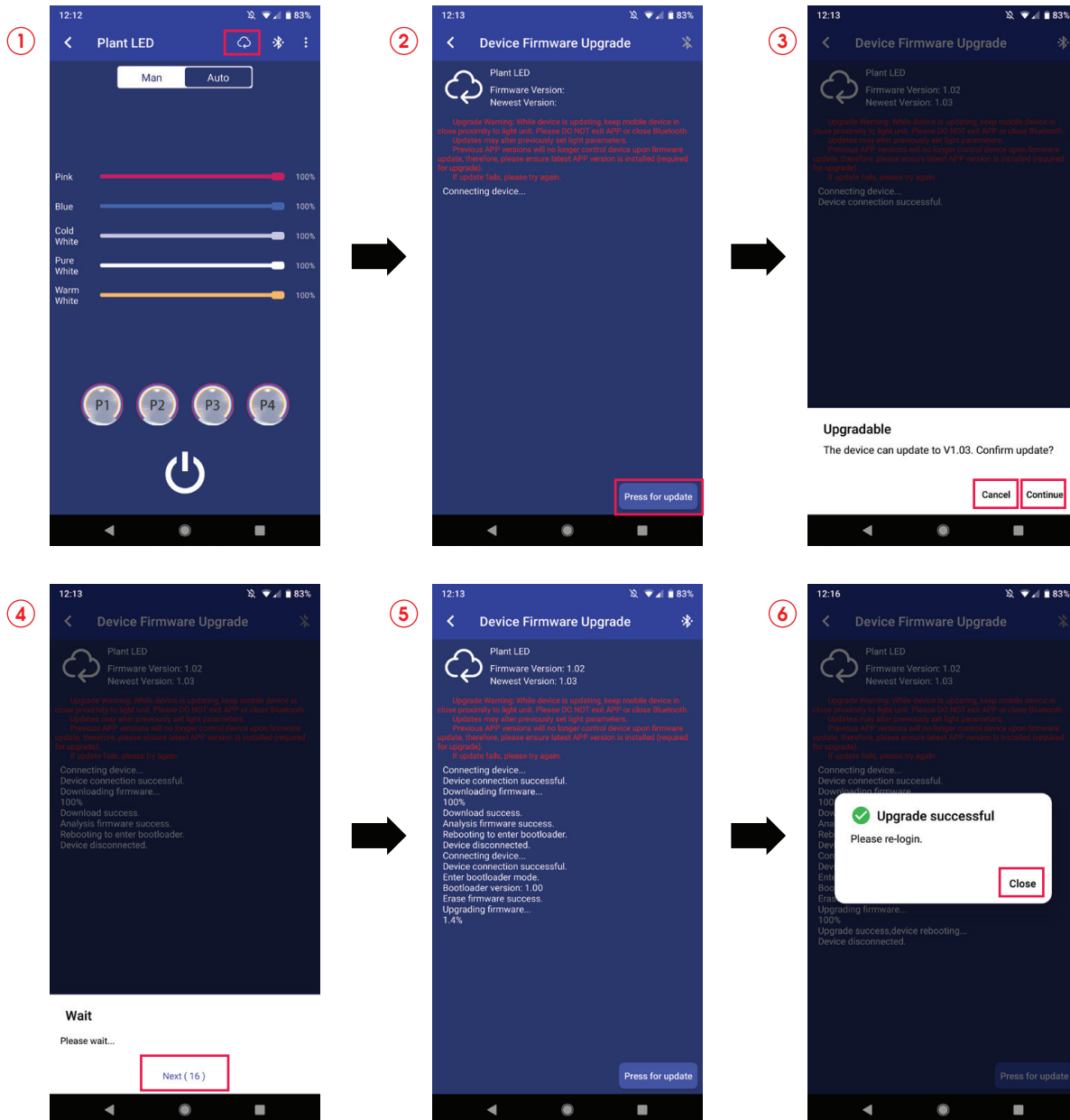
### 3.5.4 Firmware Update

Required to access the most up-to-date features of your LED.

#### Firmware Update, Method One



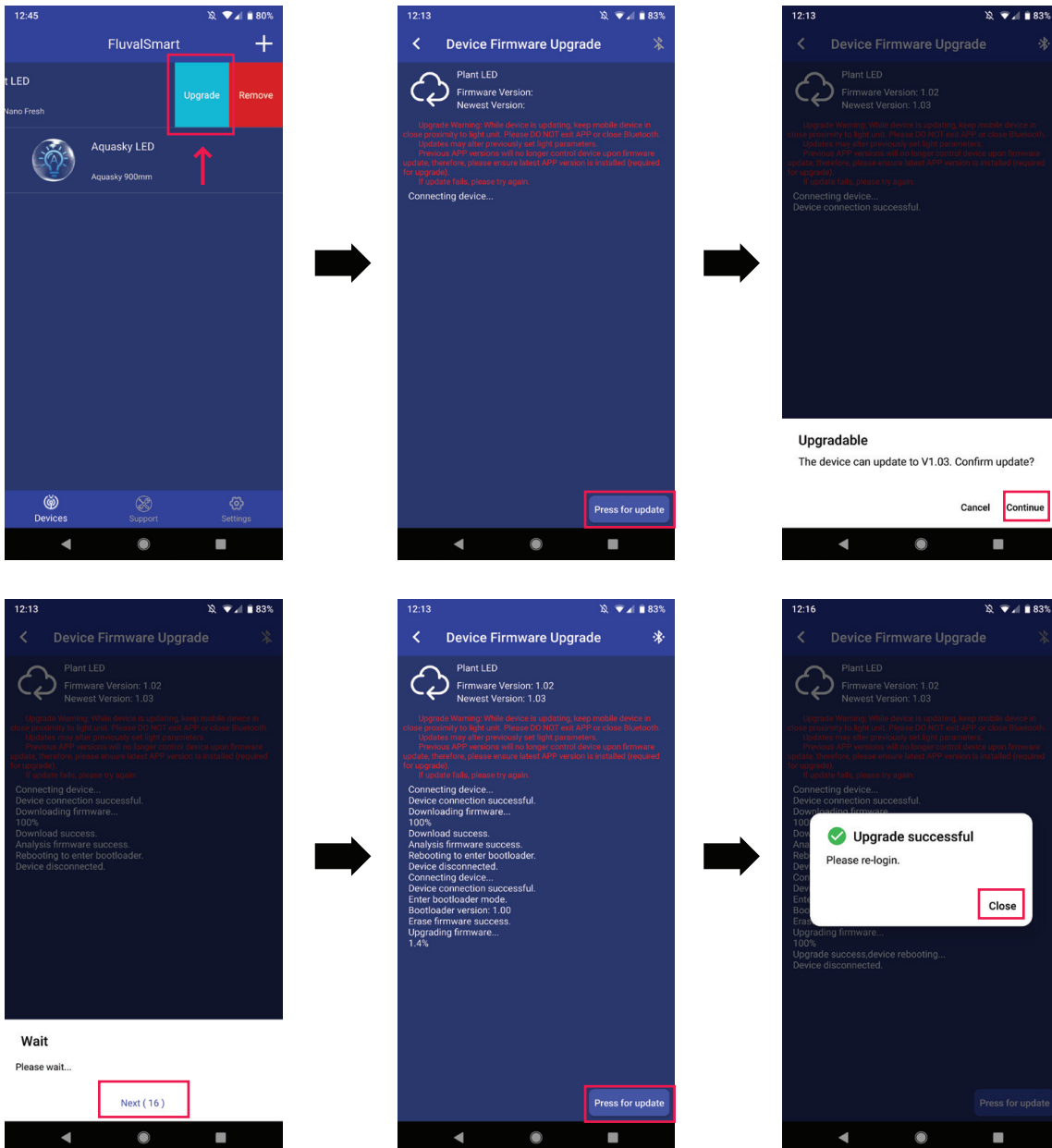
- 1 When the lamp firmware can be upgraded, an icon  will appear at the top of the device control interface. Select this icon to enter the OTA upgrade interface as shown below.
- 2 Enter the OTA screen and the system will detect if the device can be updated.
- 3 If device can be updated, a pop-up window will appear. Select “**Cancel**” to abandon the update, or “**Continue**” to proceed with the update.
- 4 After confirming the update, a 20 second countdown will begin. Please wait until time runs out, and then select “**Next**” to initiate the update.
- 5 During the update process, do not operate your mobile device. Wait until the update is completed 100% before selecting the next step.
- 6 Once the update is successful, you will receive a confirmation message. You may then select “**Close**” to exit.
- 7 If the update failed, please select “**Press for update**” again to reattempt update process.



### 3.5.4 Firmware Update (cont.)

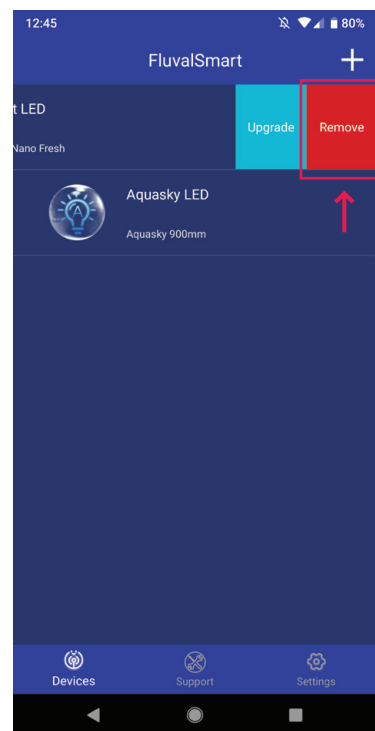
#### Firmware Update, Method Two

On the device list page, swipe left on the desired device row. You will see the “Upgrade” and “Remove” options. Select “Upgrade” to access the OTA upgrade screen. Please follow the same upgrade instructions as per Method One.



### 3.5.5 Remove the Lamp

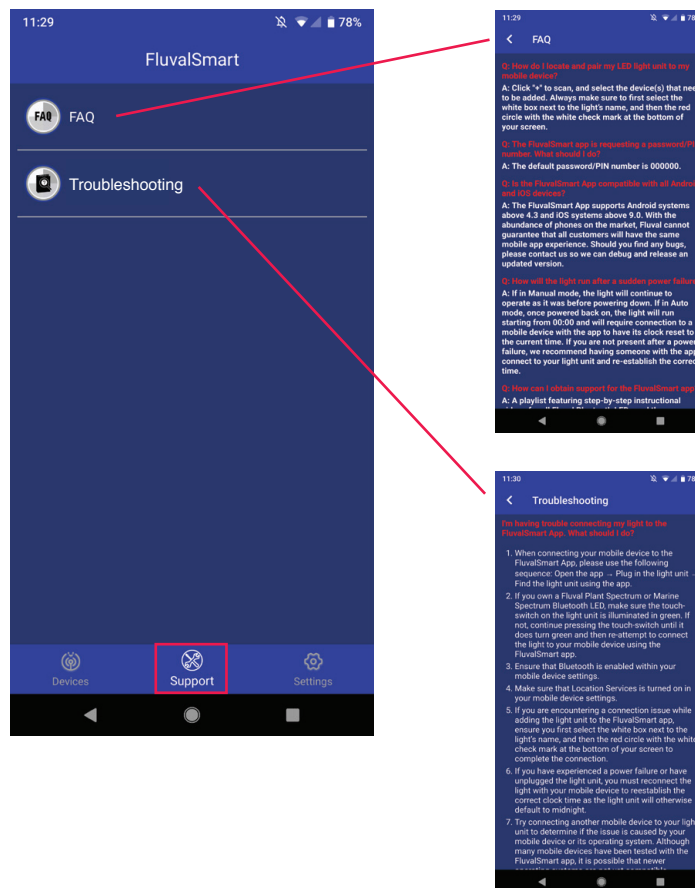
From the device list page, swipe left on the desired device row. You will see “Upgrade” and “Remove” options. Select “Remove” to delete the lamp from the current device list:



## 4. OTHER INFORMATION

### 4.1 Support

Here, you can access the FAQ and Troubleshooting features to get immediate answers to common queries regarding the app and its usage.



## 4.2 Set-up Interface

- ① The app can be programmed to automatically turn Bluetooth functionality on and off.
- ② Change language feature.

